

\$499,888 - 9758 88 Avenue, Edmonton

MLS® #E4452642

\$499,888

3 Bedroom, 1.50 Bathroom, 1,219 sqft
Single Family on 0.00 Acres

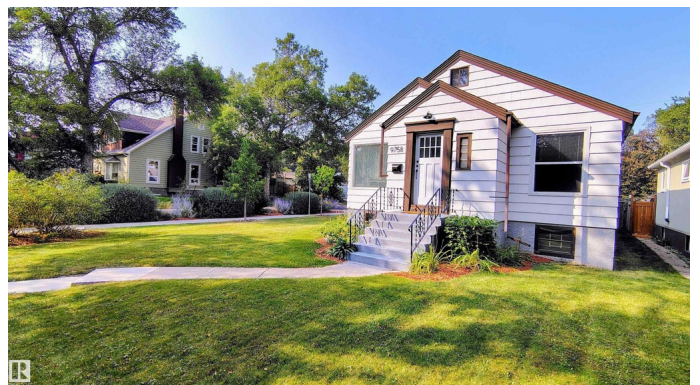
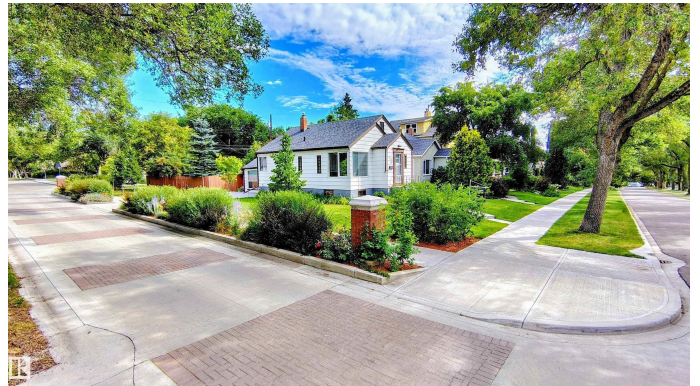
Strathcona, Edmonton, AB

5-YR WARRANTY! LOCATION! LOCATION! LOCATION! Nestled on a sunlit, west-flanking CORNER LOT in beloved OLD STRATHCONA, this tastefully updated 1½ storey, 3-bed + DEVELOPED LOFT, 1½ bath home offers comfort, character, & exceptional quality of life. Stroll scenic MILL CREEK RAVINE TRAILS, walk to WHYTE AVE, explore the FARMERS' MARKET, or bike to the UNIVERSITY—this location has it all. An established perennial garden along the west boulevard radiates beauty. Inside, original charm meets thoughtful upgrades: luxury vinyl plank floors, walnut counters, subway tile, lighting, furnace (2019), shingles (2020) & more. Over 1900 SQ FT of developed living space including a FULL-HEIGHT POURED CONCRETE BASEMENT—a structural upgrade for this era—with 8 LARGE WINDOWS and a top floor BONUS LOFT. This highly desirable location with RS-zoning offers flexibility & long-term value—mins to downtown & river valley. Live comfortably or rent out while securing a irreplaceable corner lot in Edmonton's most loved neighbourhood.

Built in 1946

Essential Information

MLS® # E4452642



Price	\$499,888
Bedrooms	3
Bathrooms	1.50
Full Baths	1
Half Baths	1
Square Footage	1,219
Acres	0.00
Year Built	1946
Type	Single Family
Sub-Type	Detached Single Family
Style	1 and Half Storey
Status	Active

Community Information

Address	9758 88 Avenue
Area	Edmonton
Subdivision	Strathcona
City	Edmonton
County	ALBERTA
Province	AB
Postal Code	T6E 2P9

Amenities

Amenities	Detectors Smoke, See Remarks
Parking	2 Outdoor Stalls, Rear Drive Access, See Remarks

Interior

Appliances	Dishwasher-Built-In, Dryer, Hood Fan, Refrigerator, Stove-Gas, Washer, Window Coverings
Heating	Forced Air-1, Natural Gas
Stories	2
Has Basement	Yes
Basement	Full, Partially Finished

Exterior

Exterior	Wood
Exterior Features	Back Lane, Corner Lot, Fenced, Flat Site, Landscaped, Shopping Nearby, See Remarks
Roof	Asphalt Shingles

Construction	Wood
Foundation	Slab

School Information

Elementary	KING EDWARD SCHOOL
Middle	MCKERNAN /ALLENDALE SCHOOL
High	STRATHCONA SCHOOL

Additional Information

Date Listed	August 13th, 2025
Days on Market	33
Zoning	Zone 15

DATA IS DEEMED RELIABLE BUT IS NOT GUARANTEED ACCURATE BY THE REALTORS® ASSOCIATION OF EDMONTON. COPYRIGHT 2025 BY THE REALTORS® ASSOCIATION OF EDMONTON. ALL RIGHTS RESERVED.Trademarks are owned or controlled by the Canadian Real Estate Association (CREA) and identify real estate professionals who are members of CREA (REALTOR®, REALTORS®) and/or the quality of services they provide (MLS®, Multiple Listing Service®)

Listing information last updated on September 15th, 2025 at 10:32am MDT