

Courtesy Of Calvin R Hexter Of Exp Realty

\$92,000 - 710 10024 Jasper Avenue, Edmonton

MLS® #E4459443

\$92,000

1 Bedroom, 1.00 Bathroom, 414 sqft
Condo / Townhouse on 0.00 Acres

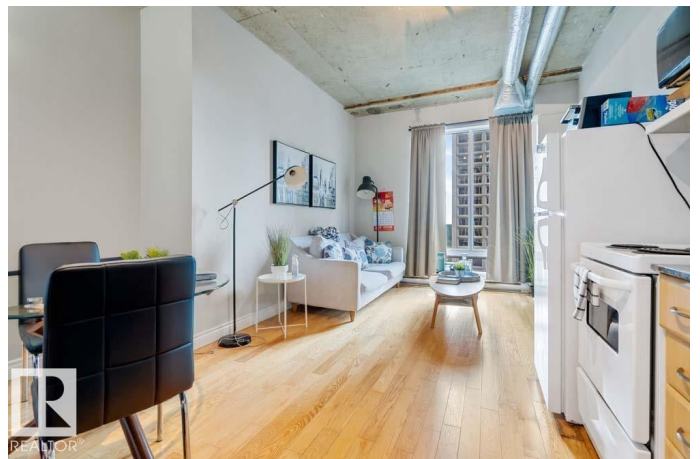
Downtown (Edmonton), Edmonton, AB

LIVE THE DOWNTOWN LIFESTYLE WITH TRUE LOFT VIBES! This 1 BEDROOM condo combines STYLE, LOCATION, and VALUE in the heart of Edmonton. Soaring EXPOSED CONCRETE CEILINGS, warm HARDWOOD FLOORS, and an OPEN-CONCEPT design create the perfect blend of character and function. The bright living and dining area is filled with NATURAL LIGHT, while the sleek, efficient kitchen makes every inch count. A spacious bedroom, 4PC BATH, and the bonus of IN-SUITE LAUNDRY check all the boxes for modern convenience. Step outside and youâ€™re right on JASPER AVENUEâ€™ just minutes to the LRT, trendy cafÃ©s, nightlife, shopping, the RIVER VALLEY, and the downtown core. Whether youâ€™re a FIRST-TIME BUYER, STUDENT, or SAVVY INVESTOR, this property delivers the BEST of URBAN LIVING at an AFFORDABLE PRICE!

Built in 1968

Essential Information

MLS® #	E4459443
Price	\$92,000
Bedrooms	1
Bathrooms	1.00
Full Baths	1
Square Footage	414



Acres	0.00
Year Built	1968
Type	Condo / Townhouse
Sub-Type	Apartment High Rise
Style	Single Level Apartment
Status	Active

Community Information

Address	710 10024 Jasper Avenue
Area	Edmonton
Subdivision	Downtown (Edmonton)
City	Edmonton
County	ALBERTA
Province	AB
Postal Code	T5J 1R9

Amenities

Amenities	On Street Parking, Ceiling 10 ft., Security Door
Parking	No Parking

Interior

Appliances	Dishwasher-Built-In, Refrigerator, Stacked Washer/Dryer, Stove-Electric
Heating	Baseboard, Natural Gas
# of Stories	18
Stories	1
Has Basement	Yes
Basement	None, No Basement

Exterior

Exterior	Concrete
Exterior Features	Public Transportation, River Valley View, Shopping Nearby, View City, View Downtown
Roof	Tar & Gravel
Construction	Concrete
Foundation	Concrete Perimeter

Additional Information

Date Listed	September 25th, 2025
Days on Market	37

Zoning	Zone 12
Condo Fee	\$337

DATA IS DEEMED RELIABLE BUT IS NOT GUARANTEED ACCURATE BY THE REALTORS® ASSOCIATION OF EDMONTON. COPYRIGHT 2025 BY THE REALTORS® ASSOCIATION OF EDMONTON. ALL RIGHTS RESERVED. Trademarks are owned or controlled by the Canadian Real Estate Association (CREA) and identify real estate professionals who are members of CREA (REALTOR®, REALTORS®) and/or the quality of services they provide (MLS®, Multiple Listing Service®)

Listing information last updated on November 1st, 2025 at 4:02am MDT