

\$299,900 - 9322 162 Street, Edmonton

MLS® #E4464212

\$299,900

1 Bedroom, 0.00 Bathroom, 1,271 sqft
Single Family on 0.00 Acres

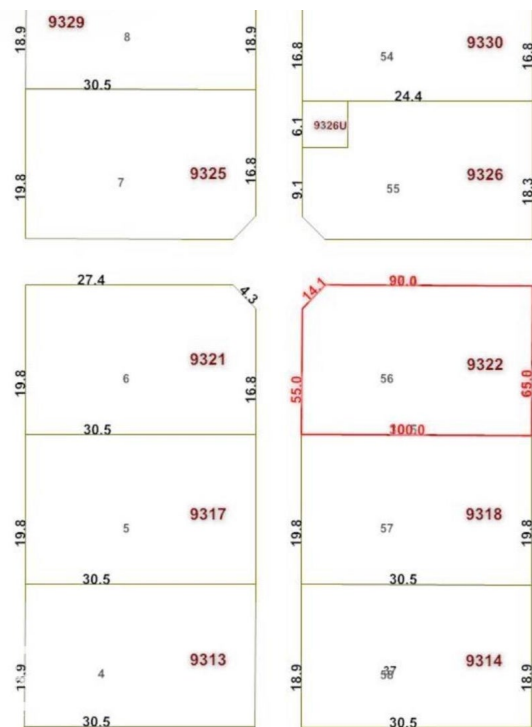
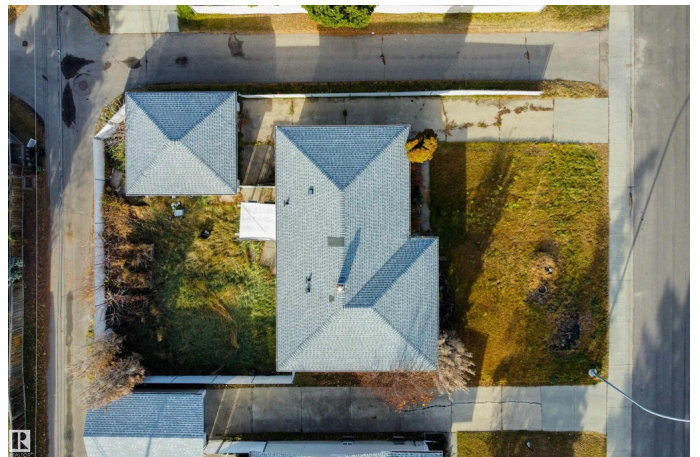
Meadowlark Park (Edmonton), Edmonton, AB

Prime 100' x 65' RS-zoned lot in desirable Meadowlark Park. A rare opportunity for smart investors and builders. This Small Scale Residential zoning supports a range of housing forms up to 3 Storeys in Height, including detached, attached, and multi-unit Residential housing, offering strong flexibility to maximize your return. Situated on a lot with a back lane and no neighbours on one side, the property is steps from schools, the Leisure Centre, Jubilee Park, the future LRT line, hospital, and minutes to West Edmonton Mall. Surrounded by successful redevelopment projects, this location is poised for continued transformation and value growth. With the City actively promoting increased density and diverse housing solutions, now is the time to capitalize on this exceptional redevelopment opportunity and secure your next profitable project! Property is sold AS IS - WHERE IS

Built in 1959

Essential Information

MLS® #	E4464212
Price	\$299,900
Bedrooms	1
Bathrooms	0.00
Square Footage	1,271
Acres	0.00



Year Built	1959
Type	Single Family
Sub-Type	Detached Single Family
Style	Bungalow
Status	Active

Community Information

Address	9322 162 Street
Area	Edmonton
Subdivision	Meadowlark Park (Edmonton)
City	Edmonton
County	ALBERTA
Province	AB
Postal Code	T5R 2M9

Amenities

Amenities	See Remarks
Parking	See Remarks

Interior

Appliances	See Remarks
Heating	See Remarks
Stories	1
Has Basement	Yes
Basement	Full, See Remarks

Exterior

Exterior	Wood, See Remarks
Exterior Features	Golf Nearby, Playground Nearby, Public Transportation, Schools, Shopping Nearby, See Remarks
Roof	Asphalt Shingles
Construction	Wood, See Remarks
Foundation	Concrete Perimeter

Additional Information

Date Listed	October 31st, 2025
Days on Market	1
Zoning	Zone 22

EDMONTON. COPYRIGHT 2025 BY THE REALTORS® ASSOCIATION OF EDMONTON. ALL RIGHTS RESERVED. Trademarks are owned or controlled by the Canadian Real Estate Association (CREA) and identify real estate professionals who are members of CREA (REALTOR®, REALTORS®) and/or the quality of services they provide (MLS®, Multiple Listing Service®)

Listing information last updated on November 1st, 2025 at 1:02pm MDT